

Professional Lighting Solutions



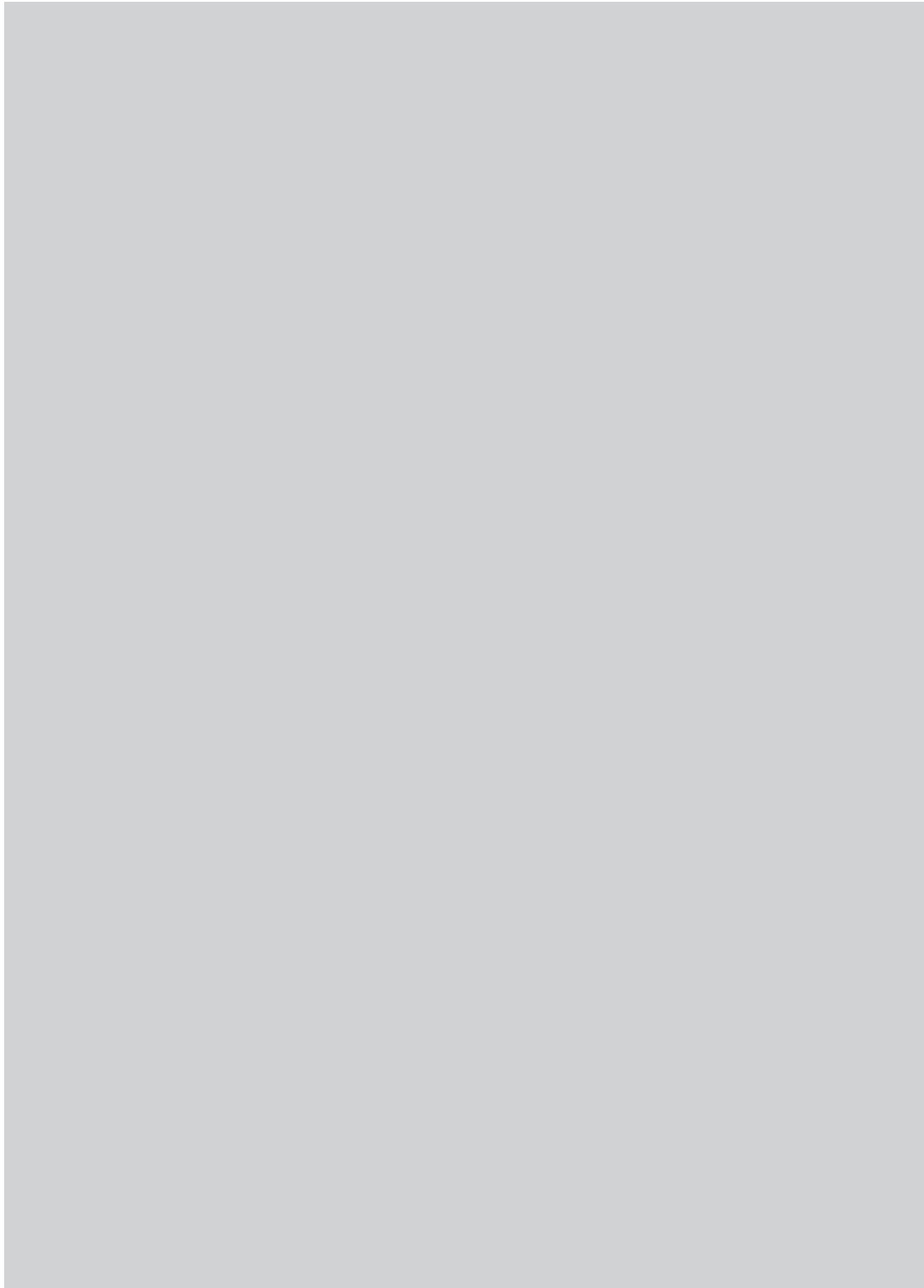
sim.eff **lite**[®]

simple. efficient. light.

CATALOGUE
2021.22



green-lighting-systems.de



Simefflite® -

THE NEW PRODUCT-LINE FROM SETOLITE LICHTTECHNIK GMBH

Simple to use, technically less complex yet still efficient lighting systems – these were the main criteria in the development of our latest product line “Simefflite®” – simple, efficient light.

SETOLITE Lichttechnik GmbH, based in Hückeswagen in the region Bergisches Land in Germany, has been supplying international customers from industry, construction, trades as well as rescue and emergency services since 1995. European armed forces also rely on SETO products for their missions and projects.

An open customer dialogue enables continuous product development and improvement. The ecological aspect, which includes in particular sustainability and environmental compatibility of the materials used as well as a high degree of reparability, characterises all SETO products.

The development and production of our spotlights and luminaires is carried out exclusively in Europe, which enables us to guarantee continuous quality and additionally the fulfillment of civil as well as military requirements. Customers appreciate our heavy-duty products, whose functionality is also not affected by the hardest use.

1995 . Foundation of SETOLITE Vertriebsgesellschaft mbH

1998 . Start of production of the ALDEBARAN® 1000 SERIES

2000 . Change of company name to today's SETOLITE Lichttechnik GmbH

2006 . Foundation of the production site in Romania

2010 . Total takeover of the management by Peter Schultz

2012 . Relocation of the headquarters from Wermelskirchen to Hückeswagen

2016 . Expansion of the floor space at the second production site

2020 . 60 employees on more than 3,500 square meters of floor space (office and production)

2021 . “Simefflite®” is introduced as a new product line

FUNCTIONALITY

OF THE INDIVIDUAL PRODUCTS

The following icons will help you to get a quick overview of the functionalities of each product:



Protection class



SOS signal



Weight



Red signal light



Rechargeable



Dimmable light output



Multi-colour chip



Low power



Flashing signal light



* REAL Lumen:

The maximum lumen measured values specified for products with the REAL Lumen (RL) quality seal are basically real values achieved in relation to the overall product including reflector, diffuser, etc. and not only correspond to the theoretical maximum values of the light source used. For this purpose, we measure appropriately labeled products ourselves in our in-house light laboratory under real operating conditions.

Note: Product descriptions and technical data, as well as availability, are subject to change without notice. All technical data are approximate values! Deviations possible!

CONTENT

Exterior Illumination & Large Area Lighting

Simefflite® M 1000	6
Simefflite® M 2000	6
Simefflite® M 3000	6
Simefflite® M 4000	7
Simefflite® M 5000	7
Simefflite® M 7000	7
Simefflite® XS	8
Simefflite® L	8
Simefflite® XL	9
Simefflite® XXL	9

Construction Site & Crane Lighting

SETO CRANESTAR 12K LED	10
SETO CRANESTAR 20K LED	10
SETO CRANESTAR 28K LED	11

Tent & Linear Illumination

Simefflite® TENT 72	12
Simefflite® TENT 110	12

Head & Hand Illumination

Simefflite® HEAD	13
SETO FLASHLIGHT FC LED	13
SETO FLASHLIGHT FC LED RECHARGEABLE	13
TRAIN DRIVER LAMP ML200 LED DB	14
Simefflite® PROFESSIONAL	14
CONDUCTOR LIGHT 2CLED	14
CONDUCTOR LIGHT 3CLED	15
CONDUCTOR LIGHT 4CLED	15

Mobile Illumination

Simefflite® CRIMELIGHT SYSTEM	16
SETO CRAFTSMAN ST-200 RC	16

Tripod & Mast Systems

SETO CONSTRUCTION SITE TRIPOD	17
Simefflite® TRIPOD STAINLESS STEEL	17

Accessories

18 – 21

Notes

22 – 25

Terms and Conditions

26

Simefflite® M 1000



**Energy-efficient LED spotlight
as replacement for 1,000 W halogen**
1 module, with integrated mounting bracket

Item no.: G750005010

Electrical Data	
Input voltage	100 - 240 V AC
Power consumption	60 W
Photometric Data	
Illuminant	1 x LED module
Luminous flux	9,900 lm
Luminous flux (REAL Lumen)*	9,108 lm
Colour temperature approx.	5,000 K
CRI	> 70
General Data	
Ambient temperature	-40 to +50 °C
Dimensions (L x W x H)	95 x 360 x 200 mm

IP67 

Simefflite® M 2000



**Energy-efficient LED spotlight
as replacement for 2,000 W halogen**
2 modules, with integrated mounting bracket

Item no.: G750005020

Electrical Data	
Input voltage	100 - 240 V AC
Power consumption	120 W
Photometric Data	
Illuminant	2 x LED modules
Luminous flux	19,800 lm
Luminous flux (REAL Lumen)*	18,216 lm
Colour temperature approx.	5,000 K
CRI	> 70
General Data	
Ambient temperature	-40 to +50 °C
Dimensions (L x W x H)	175 x 360 x 200 mm

IP67 

Simefflite® M 3000



**Energy-efficient LED spotlight
as replacement for 3,000 W halogen**
3 modules, with integrated mounting bracket

Item no.: G750005030

Electrical Data	
Input voltage	100 - 240 V AC
Power consumption	180 W
Photometric Data	
Illuminant	3 x LED modules
Luminous flux	29,700 lm
Luminous flux (REAL Lumen)*	27,324 lm
Colour temperature approx.	5,000 K
CRI	> 70
General Data	
Ambient temperature	-40 to +50 °C
Dimensions (L x W x H)	255 x 360 x 260 mm

IP67 

Simefflite[®] M 4000



**Energy-efficient LED spotlight
as replacement for 4,000 W halogen**
4 modules, with integrated mounting bracket

Item no.: G750005040

Electrical Data	
Input voltage	100 - 240 V AC
Power consumption	240 W
Photometric Data	
Illuminant	4 x LED modules
Luminous flux	39,600 lm
Luminous flux (REAL Lumen)*	36,432 lm
Colour temperature approx.	5,000 K
CRI	> 70
General Data	
Ambient temperature	-40 to +50 °C
Dimensions (L x W x H)	335 x 360 x 260 mm

IP67 7.3

Simefflite[®] M 5000



**Energy-efficient LED spotlight
as replacement for 5,000 W halogen**
5 modules, with integrated mounting bracket

Item no.: G750005050

Electrical Data	
Input voltage	100 - 240 V AC
Power consumption	300 W
Photometric Data	
Illuminant	5 x LED modules
Luminous flux	49,500 lm
Luminous flux (REAL Lumen)*	45,540 lm
Colour temperature approx.	5,000 K
CRI	> 70
General Data	
Ambient temperature	-40 to +50 °C
Dimensions (L x W x H)	415 x 360 x 360 mm

IP67 9.5

Simefflite[®] M 7000



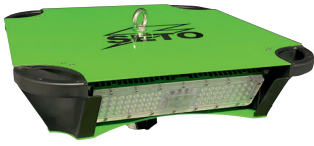
**Energy-efficient LED spotlight
as replacement for 7,000 W halogen**
7 modules, with integrated mounting bracket

Item no.: G750005070

Electrical Data	
Input voltage	100 - 240 V AC
Power consumption	420 W
Photometric Data	
Illuminant	7 x LED modules
Luminous flux	59,400 lm
Luminous flux (REAL Lumen)*	54,648 lm
Colour temperature approx.	5,000 K
CRI	> 70
General Data	
Ambient temperature	-40 to +50 °C
Dimensions (L x W x H)	575 x 360 x 360 mm

IP67 11.9

Simefflite® XS



Energy-efficient LED spotlight

With 5 m H07RN-F3G1.5 connection cable and moulded Schuko plug IP44



➤ **Included**
transport bag

Item no.: G750001001

Electrical Data	
Input voltage	200 - 240 V AC
Power consumption	200 W
Protection class	I
Photometric Data	
Illuminant	4 x LED modules
Luminous flux	30,000 lm
Luminous flux (REAL Lumen)*	24,000 lm
Colour temperature approx.	4,000 K
CRI	> 70
General Data	
Impact resistance	IK9
Ambient temperature	-40 to +59 °C
Dimensions (L x W x H)	446 x 446 x 228 mm

Luminaire:



Plug:



Simefflite® L



Large-area luminaire

Compact, milky glass lens, adjustable in several steps, with 5 m H07RN-F3G1.5-connection cable and moulded Schuko plug IP44



➤ **Included**
transport backpack

Item no.: G750002001

Electrical Data	
Input voltage	200 - 240 V AC
Power consumption	480 W
Protection class	I
Photometric Data	
Illuminant	4 x LED modules at 120 W
Luminous flux	48,000 lm
Luminous flux (REAL Lumen)*	40,000 lm
Colour temperature approx.	5,000 K
CRI	> 80
General Data	
Ambient temperature	-30 to +40 °C
Dimensions (Ø x L)	235 x 537 mm

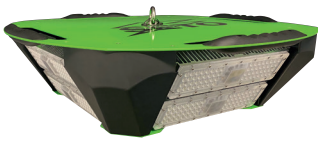
Luminaire:



Plug:



Simefflite® XL

**Energy-efficient LED spotlight**

With 5 m H07RN-F3G1.5 connection cable and moulded Schuko plug IP44



➤ **Included**
transport bag

Item no.: G750001002

Electrical Data	
Input voltage	200 - 240 V AC
Power consumption	400 W
Protection class	I
Photometric Data	
Illuminant	8 x LED modules
Luminous flux	60,000 lm
Luminous flux (REAL Lumen)*	48,000 lm
Colour temperature approx.	4,000 K
CRI	> 70
General Data	
Impact resistance	IK10
Ambient temperature	-40 to +59 °C
Dimensions (L x W x H)	650 x 650 x 290 mm

Luminaire:



Plug:



Simefflite® XXL

**Large-area luminaire**

Compact, milky glass lens, adjustable in several steps, with 5 m H07RN-F3G1.5-connection cable and moulded Schuko plug IP44



➤ **Included**
transport backpack

Item no.: G750002005

Electrical Data	
Input voltage	200 - 240 V AC
Power consumption	960 W
Protection class	I
Photometric Data	
Illuminant	4 x LED modules at 240 W
Luminous flux	96,000 lm
Luminous flux (REAL Lumen)*	80,000 lm
Colour temperature approx.	5,000 K
CRI	> 80
General Data	
Ambient temperature	-30 to +40 °C
Dimensions (Ø x L)	235 x 812 mm

Luminaire:



Plug:



SETO CRANESTAR 12K LED



Cost-efficient LED spotlight for large area lighting

With 4 adjustable modules, swivelling system: 360° in 8° steps, protection class I, impact resistance IK08, backup cable included

Item no.: 1424000041-A

Item no.: 1424000041-B

Item no.: 1424000041-C

Item no.: 1424000041-TT

Electrical Data	
Input voltage	230 / 400 V AC*
Power consumption	480 W
Photometric Data	
Illuminant	4 x XPECT LED modules
Luminous flux	79,100 lm
Luminous flux (REAL Lumen)*	73,000 lm
Colour temperature approx.	5,000 K
General Data	
Dimensions (L x W x H)	250 x 650 x 140 mm



SETO CRANESTAR 20K LED



Cost-efficient LED spotlight for large area lighting

With 6 adjustable modules, swivelling system: 240° in 8° steps, protection class I, impact resistance IK08, backup cable included

Item no.: 1424000042-A

Item no.: 1424000042-B

Item no.: 1424000042-C

Item no.: 1424000042-TT

Electrical Data	
Input voltage	230 / 400 V AC*
Power consumption	720 W
Photometric Data	
Illuminant	6 x XPECT LED modules
Luminous flux	118,600 lm
Luminous flux (REAL Lumen)*	110,000 lm
Colour temperature approx.	5,000 K
General Data	
Dimensions (L x W x H)	380 x 650 x 140 mm



SETO CRANESTAR 28K LED



Cost-efficient LED spotlight for large area lighting

With 10 adjustable modules, swivelling system: 240° in 8° steps, protection class I, impact resistance IK08, backup cable included

Item no.: 1424000044-A

Item no.: 1424000044-B

Item no.: 1424000044-C

Item no.: 1424000044-TT

Electrical Data

Input voltage	230 / 400 V AC*
Power consumption	1,200 W

Photometric Data

Illuminant	10 x XPECT LED modules
Luminous flux	186,000 lm
Luminous flux (REAL Lumen)*	183,000 lm
Colour temperature approx.	5,000 K

General Data

Dimensions (L x W x H)	729 x 650 x 132 mm
------------------------	--------------------



*Varies depending on model version

The following models are available in the CRANESTAR SERIES to choose from:

Type A: with plug CEE 16 A 3P+N+PE, 230 / 400 V

Type B: with wiring box 3P+N+PE, 230 / 400 V

Type C: with Schuko plug 16 A, 230 V

Type TT: without plug, 3P+PE, 400 V

Suitable crane frames are optionally available (see accessories page 20 and 21).

Simefflite® TENT 72



Tent luminaire as a smart replacement for lamps with compact fluorescent technology

With impact-resistant, convex Polycarbonate front screen (milky)

Item no.: G750003002

Electrical Data	
Input voltage	220 - 240 V AC
Power consumption	35 W
Protection class	I
Photometric Data	
Illuminant	LED-STRIP-TECHNOLOGY
Luminous flux	4,000 lm
Colour temperature approx.	5,000 K
CRI	> 80
General Data	
Ambient temperature	-25 to +50 °C
Dimensions (L x W x H)	480 x 115 x 122 mm



Simefflite® TENT 110



Tent luminaire as a smart replacement for lamps with compact fluorescent technology

With impact-resistant, convex Polycarbonate front screen (milky)

Item no.: G750003003

Electrical Data	
Input voltage	220 - 240 V AC
Power consumption	55 W
Protection class	I
Photometric Data	
Illuminant	LED-STRIP-TECHNOLOGY
Luminous flux	6,000 lm
Colour temperature approx.	5,000 K
CRI	> 80
General Data	
Ambient temperature	-25 to +50 °C
Dimensions (L x W x H)	605 x 115 x 122 mm



Simefflite® HEAD



Adjustable headlamp

3 light modes (high, low, red signal light), integrated headband

Electrical Data	
Operating time	Highest level: 2 h
	Lowest level: 10 h
Photometric Data	
Illuminant	CREE XPG 3 S4
Luminous flux (REAL Lumen)*	High Power: 300 lm
	Low Power: 60 lm
	Additional LED: LED (red): 70 lm
Colour temperature approx.	6,500 K
General Data	
Battery	3 x AAA Alkaline
Ambient temperature	-20 to +55 °C
Dimensions (L x W x H)	61 x 30 x 43 mm



Item no.: G750006001

SETO FLASHLIGHT FC LED



One-handed fully focusable hand lamp with batteries

4 different light modes (high, low, blinking, SOS), integrated wrist strap + belt clip

Electrical Data	
Operating time	Highest level: 3 h
	Lowest level: 12 h*
Photometric Data	
Illuminant	CREE High Power LED
General Data	
Batteries	3 x AAA Alkaline
Dimensions (Ø x L)	34 x 136.5 mm



Item no.: 78__0G619C

* Average luminous duration in continuous operation to a luminous flux of 3 lumens

SETO FLASHLIGHT FC LED RECHARGEABLE



One-handed fully focusable hand lamp with li-ion rechargeable battery

2 different light modes (high, low), rechargeable, USB-C connection, SETO IQ charge system signals battery status, integrated wrist strap + belt clip

Electrical Data	
Operating time	Highest level: 6.5 h
	Lowest level: 21 h
Charger	USB-C
Photometric Data	
Illuminant	XP-G3 S3
Luminous flux (REAL Lumen)*	380 lm
General Data	
Dimensions (Ø x L)	34 x 163.7 mm



Item no.: 78__0G620C

TRAIN DRIVER LAMP ML200 LED DB



Train driver lamp with red light for signalling

2 light modes (white working light and red signal light), switchable for battery or rechargeable battery operation, integrated capacity indicator

Item no.: 30_000021

Electrical Data	
Operating time (Highest level)	15 h
Photometric Data	
Illuminant	1 x 1 W LED (white), 12 x 0.06 W LED (red)
Luminous flux (REAL Lumen)*	75 lm (white)
General Data	
Batteries	6 x 1.2 V / 6 x 1.5 V AA
Ambient temperature	-15 to +60 °C
Dimensions (L x W x H)	130 x 70 x 50 mm

IP44 0.25



Simefflite® PROFESSIONAL



Rechargeable hand lamp with red light for signalling

3-in-1 function: spot, working and red warning light, with photo tripod holder, carrying strap and power bank, integrated capacity indicator, included USB-C charging cable and 12-24 V USB car charger plug

Item no.: G750006031

Electrical Data	
Operating time (Highest level)	3 to 3.5 h
Photometric Data	
Illuminant	1 x 10 W LED (white), 1 x 5 W LED (white), 1 x 2 W LED (red)
Colour temperature	6,500 K
General Data	
Batteries	2 x lithium-ion battery, 3.7 V, 4,400 mAh
Light range	600 m
Ambient temperature	-5 to +49 °C
Dimensions (L x W x H)	189 x 98 x 121 mm

IP65 0.6



CONDUCTOR LIGHT 2CLEED



Hand lamp with multi-colour chip

Signalling with multi-colour LED (white / red), anodised aluminium housing, integrated hand strap + belt clip

Item no.: 78_008502

Electrical Data	
Power consumption	3 W
Operating time (highest level)	2.5 h
Photometric Data	
Illuminant	2-colour LED chip (white, red)
Luminous flux (REAL Lumen)*	White: 145 lm Red: 85 lm
Colour temperature	6,000 K (white)
Beam angle	< 10°
General Data	
Batteries	3 x AAA Alkaline 1.5 V
Dimensions (Ø x L)	35 x 126 mm

IP54 0.12



CONDUCTOR LIGHT 3CLEd



Hand lamp with multi-colour chip

Signalling with multi-colour LED (white / red / green), anodised aluminium housing, integrated hand strap + belt clip

Item no.: 78__008503

Electrical Data	
Power consumption	3 W
Operating time (highest level)	2.5 h
Photometric Data	
Illuminant	3-colour LED chip (white, red, green)
Luminous flux (REAL Lumen)*	White: 145 lm Red: 85 lm Green: 110 lm
Colour temperature	6,000 K (white)
Beam angle	< 10°
General Data	
Batteries	3 x AAA Alkaline 1.5 V
Dimensions (Ø x L)	35 x 126 mm



CONDUCTOR LIGHT 4CLEd



Hand lamp with multi-colour chip

Signalling with multi-colour LED (white / red / green / blue), anodised aluminium housing, integrated hand strap + belt clip

Item no.: 78__008500

Electrical Data	
Power consumption	3 W
Operating time (highest level)	2.5 h
Photometric Data	
Illuminant	4-colour LED chip (white, red, green, blue)
Luminous flux (REAL Lumen)*	White: 145 lm Red: 85 lm Green: 110 lm Blue: 30 lm
Colour temperature	6,000 K (white)
Beam angle	< 10°
General Data	
Batteries	3 x AAA Alkaline 1.5 V
Dimensions (Ø x L)	35 x 126 mm



Simefflite® CRIMELIGHT SYSTEM



» Including transport bag

Mobile luminaire head

3 single luminaires, with milky glass lenses, easily adjustable in many ways, 30 mm DIN mount, 60° beam angle

Item no.: G750005100

Electrical Data

Input voltage	180 - 265 V AC
Power consumption	150 W (3 x 50 W)
Protection class	I

Photometric Data

Illuminant	LED
Luminous flux	21,000 lm
Luminous flux (REAL Lumen)*	18,000 lm
Colour temperature approx.	4,000 K
CRI	> 80

General Data

Ambient temperature	-30 to +50 °C
Dimensions (Ø x L)	580 x 420 mm

Luminaire:



Plug:



SETO CRAFTSMAN ST-200 RC



Mobile luminaire

With permanently integrated lithium-ion battery, light level adjustable in two stages, rear magnets, ergonomic carrying handle, including: 230 V USB charger, 12-24 V car charger plug + USB-C charging cable

Item no.: 1424000301

Electrical Data

Power consumption	20 W
Battery	Li-ion 3.7 V / 8.8 A
Protection class	III

Photometric Data

Illuminant	LED
Luminous flux	2,000 lm
Luminous flux (REAL Lumen)*	1,100 lm (mains operation)
Colour temperature approx.	6,500 K

General Data

Light functions	100 % – 30 % – OFF
Dimensions (L x W x H)	146 x 128 x 326 mm



SETO CONSTRUCTION SITE TRIPOD



Air damped construction site tripod

Adjustable feet with feed-through for ground nails, powder-coated tripod legs, including integrated DIN spigot and guy set with ground pegs, matching transport bag available separately

Item no.: 1410000345

General Data

Height	3.85 m
Max. payload	20 kg
Adaption	DIN bolt
Dimensions during transport (L x B x H)	1,150 x 200 x 200 mm



Simefflite® TRIPOD STAINLESS STEEL



Stainless steel construction site tripod

With push bars in 4 sections, included exchangeable DIN bolt, matching transport bag available separately

Item no.: G750008020

General Data

Height	4.26 m
Max. payload	20 kg
Adaption	DIN bolt
Dimensions during transport (L x B x H)	1,500 x 240 x 210 mm



Separate
transport bag
see page 19

SUSPENSION KIT HEAVY DUTY for Simefflite® XS, L, XL and XXL



Suitable for mounting on ceilings, eyelets, cranes and turntable ladders

Set consists of:
Steel chain, 3 x carabiners

Item no.: 1410926021

LIGHT-DIRECTING MODULE for Simefflite® XXL



Set of 4 (4 modules for one luminaire)

Item no.: 1410001468-SET

Set of 1 (1 module)

Item no.: 1410001468

BOLT RECEIVER DIN for Simefflite® M 1000 to M 7000



Bolt receiver DIN

With fixing screw M10 x 20 and star handle
M10 for DIN spigot, dimensions stud without
screw (Ø x H): 50 x 82 mm, DIN hole receptacle
(Ø x H): 30 x 58 mm, aluminium, anodised

Item no.: 1410960004

BOLT RECEIVER SHORT for Simefflite® M 1000 to M 7000



Bolt receiver DIN short

With fixing screw M10 x 20 and star handle M8
for DIN spigot, dimensions stud without screw
(Ø x H): 30 x 82 mm, silver anodised

Item no.: 1410960012

USB CHARGER / PLUG for SETO FLASHLIGHT FC LED RECHARGEABLE



**For socket use with supplied
USB-cables**

5 V, 1.5 A, 100 – 240 V AC

Item no.: 1410930080

LI-ION BATTERY for SETO FLASHLIGHT FC LED RECHARGEABLE



Replacement battery

2,600 mAh

Item no.: 49_001866

TRANSPORT BAG

for SETO CONSTRUCTION SITE TRIPOD and Simefflite® TRIPOD STAINLESS STEEL



For storage and safe transport

Made of nylon, integrated shoulder strap

Item no.: 1410000665

SUPPORT FRAME FOR BOOMS for SETO CRANESTAR 12K / 20K LED



For crane booms with square profile

Specially designed for use on booms whose crossbars are made of square profiles. Stainless steel. Dimensions: 175 x 150 x 100 mm, Weight: 1.1 kg

Item no.: 1410993444

SETO CRANE FRAME "SLIM"

for SETO CRANESTAR 12K / 20K / 28K LED



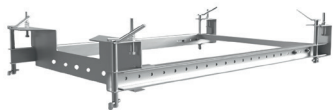
Optimized frame for mounting spotlights on construction cranes

Suitable for profile diameters from 60 to 130 mm, for suspension, with safety bolt, included screw connection set M14, galvanised steel

Item no.: 1410993445

SETO CRANE FRAME FOR BOOM

for SETO CRANESTAR 12K / 20K / 28K LED



For mounting spotlights on construction crane jibs, suitable for all jibs of top-slewing and bottom-slewing cranes of well-known manufacturers.

Suitable for profile diameters from 40 to 70 mm, max. 2,000 mm extension length, with safety bolt, included screw connection set M14, galvanised steel, dimensions: 1,199 x 768 x 143 mm, weight: 19.5 kg

Item no.: 1410993443

SETO CRANE FRAME for SETO CRANESTAR 12K / 20K / 28K LED



For mounting spotlights on construction cranes

Suitable for profile diameters from 60 to 130 mm, for suspension, with locking bolts, included screw set, galvanised steel, dimensions: 700 x 1,200 x 300 mm, weight: 15.6 kg

Item no.: 1410993442

Standard conditions of sale and delivery

1. Recognition of the terms and conditions of sale and delivery

Delivery shall only be made on the basis of the following conditions, which shall be deemed to have been accepted by placing the order. Conditions other than those shown here, i. e. in particular contradictory or supplementary general terms and conditions of the other party, do not apply. Anything else shall only apply if the terms and conditions to the contrary have been accepted by us in writing. Our silence shall not be construed as consent. Supply works and also purchasers waive the objection of any verbal ancillary agreements. The remaining terms shall not be affected by modification of any of our terms and conditions

2. Offers

Our offers are always subject to change and non-binding, insofar as they do not contain any statements to the contrary. Orders shall only be deemed accepted if they have been confirmed by us in writing.

This also applies to sales, additions, amendments or oral side agreements concluded by representatives require written confirmation by us to be effective. Illustrations, drawings, dimensions, weights and shades contained in catalogues, price lists and other printed matter represent industry-standard approximation values. In addition, we reserve the right to make changes that are technically necessary or urgently necessary for the design.

In addition, for orders for special production: information on design, dimensions, etc. require, without exception, written confirmation.

3. Prices

Prices are to be understood, unless otherwise agreed, from our warehouse Hückeswagen. They do not include VAT, packaging, freight, insurance and stamp costs. Orders for which prices are not agreed are charged at reasonable daily prices. Prices are only valid for the place of use indicated in the offer.

If there is a significant change in order-related cost factors (f. e. g. wages, materials, energy), the agreed price may be adjusted to an appropriate extent according to the influence of these cost factors.

4. Packaging

The delivered goods shall be packed at our discretion in a commercial manner and at the expense of the purchaser. The packaging will be charged at the lowest price and will not be taken back.

5. Delivery and dispatch

Deliveries are made at our discretion by rail, post, freight forwarder or our own trucks.

If the goods are shipped to the customer at the customer's request, the risk of accidental destruction and accidental deterioration of the goods shall pass on to the customer upon delivery to our shipping agent, but at the latest upon leaving the factory / storage. The purchaser shall bear the shipping costs. The buyer may not reject partial deliveries.

In the case of the delay of delivery to be accounted for by the purchaser or of dispatch, the risk passes to him with the indication of readiness for dispatch. Upon delivery, noticeable defects in packaging or goods must be indicated to the dispatch service provider at the time of acceptance of the goods, as well as to the sender within one working day. Otherwise, the goods shall be deemed to be "approved".

6. Delivery time, force majeure, labour measures

The delivery time is only deemed to be approximately agreed. The delivery period begins on the day of dispatch of the order confirmation, but not before the submission of all the documents necessary for the execution of the order, and is deemed to have been complied with if the goods have left the factory/storage by the end of the delivery period or if the goods have been declared ready for dispatch. Proper and timely self-delivery is reserved. If the supplier is prevented from fulfilling his obligation by the occurrence of unforeseeable circumstances which he could not avert despite the reasonable care required by the circumstances of the case, e. g. B. Disruption of operation, delay in delivery of essential parts, the delivery period shall be extended to an appropriate extent if the delivery or service is not impossible. If the delivery or service becomes impossible due to the above-mentioned circumstances, the supplier shall be released from the delivery obligation. The same applies to strikes and lockouts.

If, in these cases, the delivery time is extended or if the supplier is released from the delivery obligation, any claims for damages of the customer derived from this shall be waived, except for those based on intentional or grossly negligent conduct of the supplier or its senior employees, or relating to injury to life, limb or health.

If the aforementioned circumstances occur with the customer, the same legal consequences shall also apply to his obligation to purchase.

Deliveries ordered on demand must be accepted within six months of order confirmation.

7. Notification of defects, warranty / limitation period, liability

a) Warranty entitlements in kind

A prerequisite for the acceptance of a notification of defects is the prompt, proper and careful inspection of the customer's incoming goods. Liability for defects is generally rejected in the case of natural wear and tear or damage caused by incorrect treatment, excessive stress, inappropriate use, exposure to excessive heat or cold, failure to lubricate, chemical, electro-chemical or electrical influences. To ensure the function of the tools or luminaires, please refer to our product information.

The warranty claim is excluded as soon as any subsequent work or changes are made to the goods. If the delivered goods are defective or lack guaranteed properties, the supplier shall, at his choice, supply or repair replacement without further warranty claims of the purchaser. If the Supplier allows an appropriate extension period – which will periodically last for six weeks – to expire without having made a replacement or remedied the defect, the Customer shall have the right of his choice to reduce or withdraw from the contract; the assertion of further claims is excluded. Defective goods may not be further processed. The detection of such defects must be communicated to the supplier in writing without delay – in the case of recognizable defects within seven days after receipt, in the case of non-recognizable defects immediately after recognizability. The customer shall ensure that the damage is kept as low as possible. The warranty period shall expire no later than twelve months after the goods have left the supplier's factory / warehouse.

We are liable for replacement deliveries and repair work to the same extent as for the original delivery item. For replacement deliveries, the warranty period begins to run anew. We are not liable for errors arising from the documents submitted by the customer (drawings, samples and the like). I'll give it to you. Defects of part of the goods do not entitle the purchaser to object to the entire goods. Goods may only be returned with our consent and must be returned by the buyer at the supplier's request at the lowest cost.

b) Other claims for damages

Other claims for damages, unless they relate to the injury of life, body and health, are excluded from the impossibility of performance, from delay, from a positive breach of claim, from fault at the conclusion of the contract and from an unlawful act, unless they are based on intent or gross negligence on our part, our senior employees or our vicarious agents. Claims from the Product Liability Act are not taken into account.

8. Terms and conditions of payment

Pricing and calculation are in EURO. All changes in the exchange rate of the EURO occurring after the sale (date of order confirmation) invoices are payable from the invoice date within the payment conditions shown on the respective invoice.

Bills of exchange and cheques will only be accepted for performance without guarantee of protest and only after agreement and under the condition of discountability.

Discount charges shall be borne by the purchaser from the date of due date of the invoice amount and shall be payable immediately. If the target is exceeded, default costs may be calculated at a rate of 3 % above the Bundesbank discount, unless the supplier provides evidence of higher borrowing interest. Unknown purchasers will only be sent against cash on delivery or against advance dispatch of the invoice amount.

When accepting orders, we assume the creditworthiness of our customer. If we become aware of reasons that give rise to legitimate doubts as to whether the orderer will continue to comply with proper payment, e. g. settlement procedures, imminent cessation of payments, etc., we are entitled to withhold deliveries that have not yet been made and to withdraw from the contract. Claims for damages cannot be asserted from this. This does not release the customer from his obligations arising from the parts of the contract already fulfilled by us.

The withholding of payments or the offsetting of any counterclaims of the Customer is only permissible if the counterclaims of the Customer are legally established or are not disputed by us.

9. Retention of title

The delivered goods remain the property of the Supplier until all claims arising from the business relationship between the Supplier and the Customer have been paid in full and until the bills of exchange and cheques have been paid for them. By way of derogation from § 449 para. 2 BGB the Supplier may withdraw from the contract even if the Purchaser is in default of payment. Adding individual receivables to a current account as well as the drawing of balances and their recognition shall not affect the retention of title. The buyer is entitled to resell the reserved goods in the ordinary course of business, but he is not permitted to make a pledge or an appropriation of security.

The customer already assigns the customer's claim from the resale of the reserved goods to the supplier; the supplier accepts this assignment. The customer is entitled to collect these claims as long as he fulfils his obligations towards the supplier. At the supplier's request, the buyer is obliged to specify the third-party debtors and to notify them of the assignment. Any processing and processing of the goods subject to retention of title shall be carried out by the customer on behalf of the supplier without incurring any obligations for the latter. If the delivered goods are processed or linked to other goods, the supplier's property does not thereby expire, but he becomes co-owner of the new goods in proportion to the invoice value of his reserved goods to the other processed goods.

If the goods subject to retention of title are resold after processing or combination with other goods, the above-agreed advance assignment shall apply only to the amount of the invoice value of the goods subject to retention of title.

The purchaser shall immediately inform the supplier of any enforcement measures taken by third parties in respect of the goods subject to retention of title or in respect of claims assigned in advance by handing over the documents necessary for intervention.

The Supplier undertakes to release the securities to which it is entitled in accordance with the above provisions upon request and at the discretion of the Customer insofar as the value exceeds the subsidies to be secured by 20 %.

10. Tooling costs

Tool costs are calculated separately from the value of the goods.

a) The purchaser does not acquire any entitlement to the tools by paying for the cost shares for the tools; instead, they remain the property and property of the manufacturer. The manufacturer undertakes to store the tools for the customer one year after the last delivery. If the customer is informed before the expiry of this period that orders will be placed within a further year, the retention period is extended by another year. After this time and absence of re-ordering, the manufacturer can freely dispose of the tools.

b) Incurring tool costs for unsuccessful orders: We reserve the right to settle the costs incurred for orders that are cancelled at the development stage (due to difficulties in forming or forming) or during the start-up period.

aa) Before the release of the specimens, the costs incurred for: the first set of tools, bb) in case of cancellation after type release depending on the amount of the planned-Monthly requirements the costs incurred for the full scope of the Serial tools, special equipment and teaching are invoiced.

The tools processed and invoiced will remain open for inspection for four weeks and will be scrapped at the end of the period. Completed stadium plans and design drawings of the tools are not subject to the requirement of proof in order to protect the procedures used.

11. Choice of law, place of jurisdiction and place of performance

The parties to the contract expressly agree as a choice of law the validity of German law (BGB, HGB). The application of the uniform purchase laws as well as other laws is excluded. The place of performance is the place of our company headquarters. The place of jurisdiction for disputes with purchasers who are registered traders, a legal entity under public law or a special fund under public law shall be the competent court for our registered office. However, we reserve the right to sue at the buyer's place of business and domicile.

12. Service, repairs and complaints

Please note when returning your goods for service, repair or complaint purposes. Please also use our separate service terms and conditions. These can be found on the internet at our Website in the area of the General Terms and Conditions.

simple. efficient. light.



green-lighting-systems.de

SETOLITE Lichttechnik GmbH

Bockhackerstr. 13
42499 Hückeswagen

Germany

Phone: +49 21 92 936 24-0 info@setolite.de

Fax: +49 21 92 936 24-25 www.green-lighting-systems.de